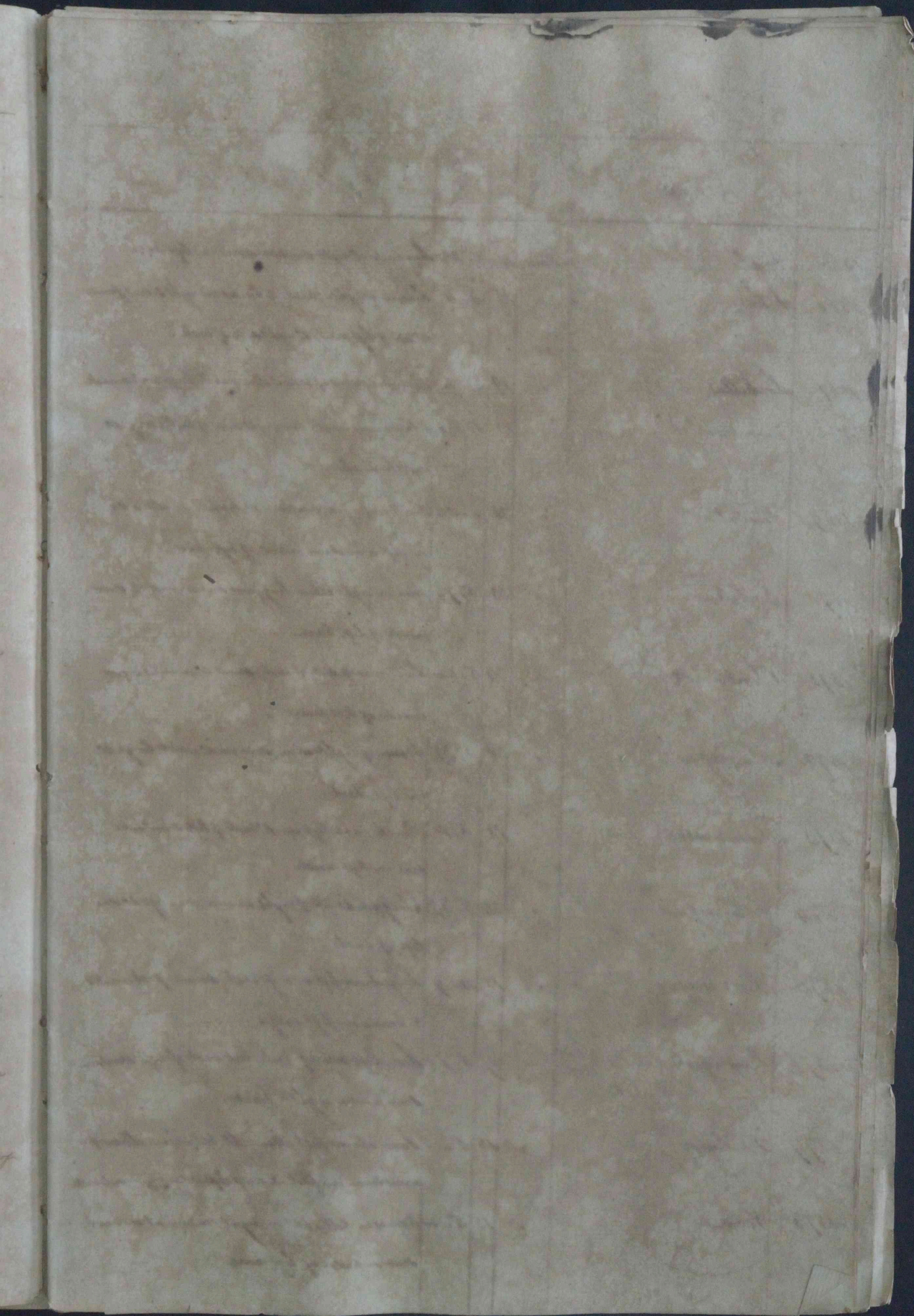


No.	Species	Sex	Age	Measurements	Remarks
1551	Arcturaea	♂	ad.	W. 1.5, L. 2.5, H. 1.5, T. 1.5, E. 1.5, S. 1.5, C. 1.5, F. 1.5, G. 1.5, I. 1.5, O. 1.5, P. 1.5, Q. 1.5, R. 1.5, U. 1.5, V. 1.5, W. 1.5, X. 1.5, Y. 1.5, Z. 1.5, AA. 1.5, AB. 1.5, AC. 1.5, AD. 1.5, AE. 1.5, AF. 1.5, AG. 1.5, AH. 1.5, AI. 1.5, AJ. 1.5, AK. 1.5, AL. 1.5, AM. 1.5, AN. 1.5, AO. 1.5, AP. 1.5, AQ. 1.5, AR. 1.5, AS. 1.5, AT. 1.5, AU. 1.5, AV. 1.5, AW. 1.5, AX. 1.5, AY. 1.5, AZ. 1.5, BA. 1.5, BB. 1.5, BC. 1.5, BD. 1.5, BE. 1.5, BF. 1.5, BG. 1.5, BH. 1.5, BI. 1.5, BJ. 1.5, BK. 1.5, BL. 1.5, BM. 1.5, BN. 1.5, BO. 1.5, BP. 1.5, BQ. 1.5, BR. 1.5, BS. 1.5, BT. 1.5, BU. 1.5, BV. 1.5, BW. 1.5, BX. 1.5, BY. 1.5, BZ. 1.5, CA. 1.5, CB. 1.5, CC. 1.5, CD. 1.5, CE. 1.5, CF. 1.5, CG. 1.5, CH. 1.5, CI. 1.5, CJ. 1.5, CK. 1.5, CL. 1.5, CM. 1.5, CN. 1.5, CO. 1.5, CP. 1.5, CQ. 1.5, CR. 1.5, CS. 1.5, CT. 1.5, CU. 1.5, CV. 1.5, CW. 1.5, CX. 1.5, CY. 1.5, CZ. 1.5, DA. 1.5, DB. 1.5, DC. 1.5, DD. 1.5, DE. 1.5, DF. 1.5, DG. 1.5, DH. 1.5, DI. 1.5, DJ. 1.5, DK. 1.5, DL. 1.5, DM. 1.5, DN. 1.5, DO. 1.5, DP. 1.5, DQ. 1.5, DR. 1.5, DS. 1.5, DT. 1.5, DU. 1.5, DV. 1.5, DW. 1.5, DX. 1.5, DY. 1.5, DZ. 1.5, EA. 1.5, EB. 1.5, EC. 1.5, ED. 1.5, EE. 1.5, EF. 1.5, EG. 1.5, EH. 1.5, EI. 1.5, EJ. 1.5, EK. 1.5, EL. 1.5, EM. 1.5, EN. 1.5, EO. 1.5, EP. 1.5, EQ. 1.5, ER. 1.5, ES. 1.5, ET. 1.5, EU. 1.5, EV. 1.5, EW. 1.5, EX. 1.5, EY. 1.5, EZ. 1.5, FA. 1.5, FB. 1.5, FC. 1.5, FD. 1.5, FE. 1.5, FF. 1.5, FG. 1.5, FH. 1.5, FI. 1.5, FJ. 1.5, FK. 1.5, FL. 1.5, FM. 1.5, FN. 1.5, FO. 1.5, FP. 1.5, FQ. 1.5, FR. 1.5, FS. 1.5, FT. 1.5, FU. 1.5, FV. 1.5, FW. 1.5, FX. 1.5, FY. 1.5, FZ. 1.5, GA. 1.5, GB. 1.5, GC. 1.5, GD. 1.5, GE. 1.5, GF. 1.5, GG. 1.5, GH. 1.5, GI. 1.5, GJ. 1.5, GK. 1.5, GL. 1.5, GM. 1.5, GN. 1.5, GO. 1.5, GP. 1.5, GQ. 1.5, GR. 1.5, GS. 1.5, GT. 1.5, GU. 1.5, GV. 1.5, GW. 1.5, GX. 1.5, GY. 1.5, GZ. 1.5, HA. 1.5, HB. 1.5, HC. 1.5, HD. 1.5, HE. 1.5, HF. 1.5, HG. 1.5, HH. 1.5, HI. 1.5, HJ. 1.5, HK. 1.5, HL. 1.5, HM. 1.5, HN. 1.5, HO. 1.5, HP. 1.5, HQ. 1.5, HR. 1.5, HS. 1.5, HT. 1.5, HU. 1.5, HV. 1.5, HW. 1.5, HX. 1.5, HY. 1.5, HZ. 1.5, IA. 1.5, IB. 1.5, IC. 1.5, ID. 1.5, IE. 1.5, IF. 1.5, IG. 1.5, IH. 1.5, II. 1.5, IJ. 1.5, IK. 1.5, IL. 1.5, IM. 1.5, IN. 1.5, IO. 1.5, IP. 1.5, IQ. 1.5, IR. 1.5, IS. 1.5, IT. 1.5, IU. 1.5, IV. 1.5, IW. 1.5, IX. 1.5, IY. 1.5, IZ. 1.5, JA. 1.5, JB. 1.5, JC. 1.5, JD. 1.5, JE. 1.5, JF. 1.5, JG. 1.5, JH. 1.5, JI. 1.5, JJ. 1.5, JK. 1.5, JL. 1.5, JM. 1.5, JN. 1.5, JO. 1.5, JP. 1.5, JQ. 1.5, JR. 1.5, JS. 1.5, JT. 1.5, JU. 1.5, JV. 1.5, JW. 1.5, JX. 1.5, JY. 1.5, JZ. 1.5, KA. 1.5, KB. 1.5, KC. 1.5, KD. 1.5, KE. 1.5, KF. 1.5, KG. 1.5, KH. 1.5, KI. 1.5, KJ. 1.5, KL. 1.5, KM. 1.5, KN. 1.5, KO. 1.5, KP. 1.5, KQ. 1.5, KR. 1.5, KS. 1.5, KT. 1.5, KU. 1.5, KV. 1.5, KW. 1.5, KX. 1.5, KY. 1.5, KZ. 1.5, LA. 1.5, LB. 1.5, LC. 1.5, LD. 1.5, LE. 1.5, LF. 1.5, LG. 1.5, LH. 1.5, LI. 1.5, LJ. 1.5, LK. 1.5, LL. 1.5, LM. 1.5, LN. 1.5, LO. 1.5, LP. 1.5, LQ. 1.5, LR. 1.5, LS. 1.5, LT. 1.5, LU. 1.5, LV. 1.5, LW. 1.5, LX. 1.5, LY. 1.5, LZ. 1.5, MA. 1.5, MB. 1.5, MC. 1.5, MD. 1.5, ME. 1.5, MF. 1.5, MG. 1.5, MH. 1.5, MI. 1.5, MJ. 1.5, MK. 1.5, ML. 1.5, MM. 1.5, MN. 1.5, MO. 1.5, MP. 1.5, MQ. 1.5, MR. 1.5, MS. 1.5, MT. 1.5, MU. 1.5, MV. 1.5, MW. 1.5, MX. 1.5, MY. 1.5, MZ. 1.5, NA. 1.5, NB. 1.5, NC. 1.5, ND. 1.5, NE. 1.5, NF. 1.5, NG. 1.5, NH. 1.5, NI. 1.5, NJ. 1.5, NK. 1.5, NL. 1.5, NM. 1.5, NN. 1.5, NO. 1.5, NP. 1.5, NQ. 1.5, NR. 1.5, NS. 1.5, NT. 1.5, NU. 1.5, NV. 1.5, NW. 1.5, NX. 1.5, NY. 1.5, NZ. 1.5, OA. 1.5, OB. 1.5, OC. 1.5, OD. 1.5, OE. 1.5, OF. 1.5, OG. 1.5, OH. 1.5, OI. 1.5, OJ. 1.5, OK. 1.5, OL. 1.5, OM. 1.5, ON. 1.5, OO. 1.5, OP. 1.5, OQ. 1.5, OR. 1.5, OS. 1.5, OT. 1.5, OU. 1.5, OV. 1.5, OW. 1.5, OX. 1.5, OY. 1.5, OZ. 1.5, PA. 1.5, PB. 1.5, PC. 1.5, PD. 1.5, PE. 1.5, PF. 1.5, PG. 1.5, PH. 1.5, PI. 1.5, PJ. 1.5, PK. 1.5, PL. 1.5, PM. 1.5, PN. 1.5, PO. 1.5, PP. 1.5, PQ. 1.5, PR. 1.5, PS. 1.5, PT. 1.5, PU. 1.5, PV. 1.5, PW. 1.5, PX. 1.5, PY. 1.5, PZ. 1.5, QA. 1.5, QB. 1.5, QC. 1.5, QD. 1.5, QE. 1.5, QF. 1.5, QG. 1.5, QH. 1.5, QI. 1.5, QJ. 1.5, QK. 1.5, QL. 1.5, QM. 1.5, QN. 1.5, QO. 1.5, QP. 1.5, QQ. 1.5, QR. 1.5, QS. 1.5, QT. 1.5, QU. 1.5, QV. 1.5, QW. 1.5, QX. 1.5, QY. 1.5, QZ. 1.5, RA. 1.5, RB. 1.5, RC. 1.5, RD. 1.5, RE. 1.5, RF. 1.5, RG. 1.5, RH. 1.5, RI. 1.5, RJ. 1.5, RK. 1.5, RL. 1.5, RM. 1.5, RN. 1.5, RO. 1.5, RP. 1.5, RQ. 1.5, RR. 1.5, RS. 1.5, RT. 1.5, RU. 1.5, RV. 1.5, RW. 1.5, RX. 1.5, RY. 1.5, RZ. 1.5, SA. 1.5, SB. 1.5, SC. 1.5, SD. 1.5, SE. 1.5, SF. 1.5, SG. 1.5, SH. 1.5, SI. 1.5, SJ. 1.5, SK. 1.5, SL. 1.5, SM. 1.5, SN. 1.5, SO. 1.5, SP. 1.5, SQ. 1.5, SR. 1.5, SS. 1.5, ST. 1.5, SU. 1.5, SV. 1.5, SW. 1.5, SX. 1.5, SY. 1.5, SZ. 1.5, TA. 1.5, TB. 1.5, TC. 1.5, TD. 1.5, TE. 1.5, TF. 1.5, TG. 1.5, TH. 1.5, TI. 1.5, TJ. 1.5, TK. 1.5, TL. 1.5, TM. 1.5, TN. 1.5, TO. 1.5, TP. 1.5, TQ. 1.5, TR. 1.5, TS. 1.5, TT. 1.5, TU. 1.5, TV. 1.5, TW. 1.5, TX. 1.5, TY. 1.5, TZ. 1.5, UA. 1.5, UB. 1.5, UC. 1.5, UD. 1.5, UE. 1.5, UF. 1.5, UG. 1.5, UH. 1.5, UI. 1.5, UJ. 1.5, UK. 1.5, UL. 1.5, UM. 1.5, UN. 1.5, UO. 1.5, UP. 1.5, UQ. 1.5, UR. 1.5, US. 1.5, UT. 1.5, UY. 1.5, UZ. 1.5, VA. 1.5, VB. 1.5, VC. 1.5, VD. 1.5, VE. 1.5, VF. 1.5, VG. 1.5, VH. 1.5, VI. 1.5, VJ. 1.5, VK. 1.5, VL. 1.5, VM. 1.5, VN. 1.5, VO. 1.5, VP. 1.5, VQ. 1.5, VR. 1.5, VS. 1.5, VT. 1.5, VU. 1.5, VV. 1.5, VW. 1.5, VX. 1.5, VY. 1.5, VZ. 1.5, WA. 1.5, WB. 1.5, WC. 1.5, WD. 1.5, WE. 1.5, WF. 1.5, WG. 1.5, WH. 1.5, WI. 1.5, WJ. 1.5, WK. 1.5, WL. 1.5, WM. 1.5, WN. 1.5, WO. 1.5, WP. 1.5, WQ. 1.5, WR. 1.5, WS. 1.5, WT. 1.5, WU. 1.5, WV. 1.5, WW. 1.5, WX. 1.5, WY. 1.5, WZ. 1.5, XA. 1.5, XB. 1.5, XC. 1.5, XD. 1.5, XE. 1.5, XF. 1.5, XG. 1.5, XH. 1.5, XI. 1.5, XJ. 1.5, XK. 1.5, XL. 1.5, XM. 1.5, XN. 1.5, XO. 1.5, XP. 1.5, XQ. 1.5, XR. 1.5, XS. 1.5, XT. 1.5, XU. 1.5, XV. 1.5, XW. 1.5, XX. 1.5, XY. 1.5, XZ. 1.5, YA. 1.5, YB. 1.5, YC. 1.5, YD. 1.5, YE. 1.5, YF. 1.5, YG. 1.5, YH. 1.5, YI. 1.5, YJ. 1.5, YK. 1.5, YL. 1.5, YM. 1.5, YN. 1.5, YO. 1.5, YP. 1.5, YQ. 1.5, YR. 1.5, YS. 1.5, YT. 1.5, YU. 1.5, YV. 1.5, YW. 1.5, YX. 1.5, YY. 1.5, YZ. 1.5, ZA. 1.5, ZB. 1.5, ZC. 1.5, ZD. 1.5, ZE. 1.5, ZF. 1.5, ZG. 1.5, ZH. 1.5, ZI. 1.5, ZJ. 1.5, ZK. 1.5, ZL. 1.5, ZM. 1.5, ZN. 1.5, ZO. 1.5, ZP. 1.5, ZQ. 1.5, ZR. 1.5, ZS. 1.5, ZT. 1.5, ZU. 1.5, ZV. 1.5, ZW. 1.5, ZX. 1.5, ZY. 1.5, ZZ. 1.5	



No.	Names	Age	Sex	Description
1552	Red Brown	22	♂	Scar with several small dark spots about 12 dots on left leg.
1553	White	23	♂	Scar each of left hand & behind right ear several dots on each leg.
1554	Thomas	25	♂	Large scar on right ear & forehead & on top of left shoulder & d. back of it.
1555	Macintosh	19	♂	Long scar on left arm & on right shoulder & on left breast.
1556	John	19	♂	Scar on right side & on left leg several marks on left thigh.
1557	Scotty	21	♂	Short scar on right breast faint d. on d. side of belly; d. right side of back.
1558	B.W.	20	♂	Scanty marks on left arm & on right wrist. small scar on right chest & on side of left knee.
1559	Swamp	17	♂	Some high knots on breast & on top of right shoulder & under left knee.
1560	Swamp	25	♂	Large scar on left arm & on side of left leg. Scar on right wrist.
1561	White	22	♂	Scar on right arm & on belly faint scar on other.
1562	Peter	27	♂	Large scar on right side long d. on breast & on inside of each elbow.
1563	Hamilton	20	♂	Long scar on left arm conspicuous dark inside of left knee small scar on right arm.
1564	Baker	19	♂	Faint scar on right shoulder & on back; d. on right thigh; d. on left arm.





No.	Name	Description
1565	Leaf	leaf of 3. 25. back of right hand side of leaf
1566	Leaf	leaf of 3. 25. back of right hand side of leaf 2. 25. of leaf on right side of leaf
1567	Leaf	leaf of 3. 25. back of right hand side of leaf
1568	Leaf	leaf of 3. 25. back of right hand side of leaf
1569	Leaf	leaf of 3. 25. back of right hand side of leaf
1570	Leaf	leaf of 3. 25. back of right hand side of leaf
1571	Leaf	leaf of 3. 25. back of right hand side of leaf
1572	Leaf	leaf of 3. 25. back of right hand side of leaf
1573	Leaf	leaf of 3. 25. back of right hand side of leaf
1574	Leaf	leaf of 3. 25. back of right hand side of leaf
1575	Leaf	leaf of 3. 25. back of right hand side of leaf
1576	Leaf	leaf of 3. 25. back of right hand side of leaf
1577	Leaf	leaf of 3. 25. back of right hand side of leaf
1578	Leaf	leaf of 3. 25. back of right hand side of leaf

[Faint, illegible handwritten text on the right page]



No.	Names	No.	No.	Description
1565	Inch	17	5.25	Scar back of right shoulder dent on left knee
1566	Inch	16	5.11	Scar on right cheek 2 scars on right side 2 faint 2° top of left arm 18 right side of back
1567	Loobilla	19	5.3	Scar upper side of belly below scar 2 large dent on back
1568	Quombas	25	5.176	2 scars near neck scar right side of back long 10 dent on neck
1569	Pombalio	21	5.05	Scar top of right shoulder 1° between shoulders 10 in left arm from outside of left knee
1570	Loobilla	23	5.76	Scar on right elbow long faint scar on back 2 scars inside of left knee
1571	Chimbaree	24	5.	Scar on each side of back small 1° on arms dent inside of left knee
1572	Masinga	20	5.276	Scar on right arm scar on 1° wrist large 1° on left cheek
1573	Sumambo	18	5.15	Mark near left arm 1° back of left shoulder scar on left wrist
1574	Masinga	20	5.236	long mark top of right arm dent on left 10 scar left of back
1575	Lacungoo	15	5.9	large burn left side of back small patches 10 2 scars on left calf
1576	Kuingombas	17	5.15	Scar left side of back dent back of right shoulder scar under right knee
1577	Pelamp	15	5.	Scar above left elbow 1° between elbow & wrist scar on foot 2 scars left side 2 scars on back
1578	Keta	15	5.	Scar on belly 1° on right side dent on back scar outside of left knee



[Faint, illegible handwriting on aged paper]



No.	Name	Age	Sex	Part	Description
1379	W. ...	27	M
1380
1381
1382
1383
1384
1385
1386
1387
1388
1389
1390

The right page of the manuscript is mostly blank, with some faint, illegible handwriting visible. The paper shows signs of age, including yellowing and some staining.



No.	Name	Age	Sex	Remarks
1579	Jack	25	♂	Scar on left breast. Scar above left elbow.
1580	Shanda	16	♀	Scar on left breast. Scar at top of thigh. Scar outside of knee.
1581	Lucia	15	♀	Scar on left breast. Scar on right knee. 2 scars outside of left thigh.
1582	William	17	♂	Scar left side of back. Scar near left ankle.
1583	Jim Brewer	15	♂	Scar on belly. Scar above nose. Scar right knee.
1584	Sita	15	♀	Scar left breast. Scar at top of belly. Scar at under right calf.
1585	Papa	15	♂	Scar on back of neck. Scar on right shin. Scar on thigh. Scar on leg.
1586	Frank	15	♂	Large scar on right shoulder. Scar on left hand.
1587	Chachaco	15	♂	Scar on right shoulder. Scar on right cheek. Scar on left hand.
1588	Bygho	17	♂	Scar on each breast. Scar on each cheek.
1589	Chambouss	15	♂	Scar on right breast. Scar at top of right shoulder. Scar at back of right shoulder.
1590	Quaba	15	♂	Scar on right breast. Scar on left elbow. Scar on left thigh.



[Faint, illegible handwriting on aged, yellowed paper, likely bleed-through from the reverse side of the page.]



No.	Species	Sex	Age	Locality
1571	Gemma	♂	12.2.2	South side of belly, deep scar on back Dorsal scar
1572	Alouatta	•	11.2.2	Scar on back, scar on front side on legs Scar on right side
1573	Cynopithecus	•	12.2.2	Scar on side of right elbow, scar on side of right leg scar on left scapula
1574	Leontideus	•	11.2.2	Scar on back of right shoulder blades
1575	Talaya	•	12.2.2	Scar on left side of belly, scar on right side left shoulder, scar on back
1576	Macaca	•	12.2.2	Scar on left side, scar under left elbow, scar on right elbow
1577	Alouatta	•	11.2.2	Scar on side of right leg, scar on side of right arm scar on side of left arm
1578	Crantallia	•	11.2.2	Scar on right side, scar on left side, scar on side of right leg
1579	Brachyteles	•	11.2.2	Scar on back of right shoulder, scar on side of right leg
1600	Macaca	•	12.2.2	Scar on belly, scar on right side, scar on left side
1601	Chlorocebus	•	12.2.2	Scar on right side, scar on left side of right leg
1602	Brachyteles	•	12.2.2	Scar on left side of arm, scar on side of right leg
1603	Surua	•	12.2.2	Scar on back of belly, scar on back of left shoulder

1571

1572

1573

1574

1575

1576

1577

1578

1579

1600

1601

1602

1603



No.	Name	Sex	Age	Height	Weight	Measurements
1591	Goma	Boy	12	4. 2		Scars on top of belly; large scars on back; d. on left side.
1592	Loimta	"	13	4. 4		Scars marked on face; faint scars on left breast; large d. on right chin.
1593	Cuffee	"	12	4. 13		Scars inside of right elbow; d. outside of right leg; scar on left ankle.
1594	Dungo	"	11	4. 0		Scars below back of right shoulder blades.
1595	Talmoo	"	12	4. 23		Scars left side of belly; d. top of belly; d. on left shoulder; dent on back.
1596	Macafea	"	13	4. 4		Scars on left side; dent under left elbow; large scar on right knee.
1597	Soba	"	13	4. 4 1/2		Scars inside of left leg; scars inside of right knee; d. outside of left knee.
1598	Coindatata	"	12	4. 3 1/2		2 dents on right side; d. below right calf; 2 scars outside of left leg.
1599	Baumba	"	14	4. 8		Scars below back of left shoulder; d. above elbow; d. outside of left leg.
1600	Macuonda	"	13	4. 5		Dent on belly; scars on right calf; d. above left ankle.
1601	Chubela	"	12	4. 2 1/2		Large scar on left side; faint d. outside of left leg.
1602	Prabu	"	12	4. 3 1/2		Large scar left side of chin; d. outside of right leg.
1603	Faru	Woman	50	4. 1/2		Scars marked on belly; scars back of left shoulder.



1539
88
—
89
13
—
16.12



Handwritten title or header in cursive script, possibly "L'Esprit de la..."

164	Solus	18-20-22	Small body, dark hair on top of head on left side
165	Parvulus	18-20-22	Small body, dark hair on top of head on right side
166	Solus	18-20-22	Small body, dark hair on top of head on left side
167	Parvulus	18-20-22	Small body, dark hair on top of head on right side
168	Solus	18-20-22	Small body, dark hair on top of head on left side
169	Parvulus	18-20-22	Small body, dark hair on top of head on right side
170	Solus	18-20-22	Small body, dark hair on top of head on left side
171	Parvulus	18-20-22	Small body, dark hair on top of head on right side
172	Solus	18-20-22	Small body, dark hair on top of head on left side
173	Parvulus	18-20-22	Small body, dark hair on top of head on right side
174	Solus	18-20-22	Small body, dark hair on top of head on left side
175	Parvulus	18-20-22	Small body, dark hair on top of head on right side
176	Solus	18-20-22	Small body, dark hair on top of head on left side
177	Parvulus	18-20-22	Small body, dark hair on top of head on right side



No.	Name	Measure	Description
1609	Selou	15 3-22	Small scar on belly, faint scars on left arm & ear on left elbow.
1613	Sumbata	15 4-7 1/2	Scar on neck above scapula, scar on left wrist & scar on right hip.
1616	Simba	15 4-18 1/2	Long scar on belly, faint scars on neck & under part of back, right side of back.
1617	Chifpaco	17 4-9	Faint scar on belly & scar above ankle.
1618	Chindaco	19 5-10	Scar from left to right shoulder, scar on left arm & scar above ear.
1619	Kulu	17 3-0 1/2	Scar on left breast, long scar on right side.
1610	Selou	20	Scar on breast, scar back of right shoulder.
1611	Chicamance	15 4-11 1/2	Large faint scar on belly, scar on left arm & scar on left leg.
1612	Tringre	17 4-10	Scar on right hip, scar on left arm.
1613	Chingyabai	23 4-11 1/2	Faint scar inside of left leg, scar on chin.
1614	Batta	17 4-10	Large scar on breast, scar on belly, hand had 5 fingers & a thumb on left hand.
1615	Satta	18 4-7 1/2	Scar on forehead, scar on left leg.
1616	Sumbata	15 4-9 1/2	Faint scar on left breast, scar on left elbow, faint scar above left eye.
1617	Soela	15 4-8 1/2	Scar on left breast, scar below right knee, 2 scars outside of left knee.



Faint, illegible handwriting on aged, yellowed paper, possibly a ledger or account book. The text is organized into columns and rows, but the characters are too faded to be transcribed.

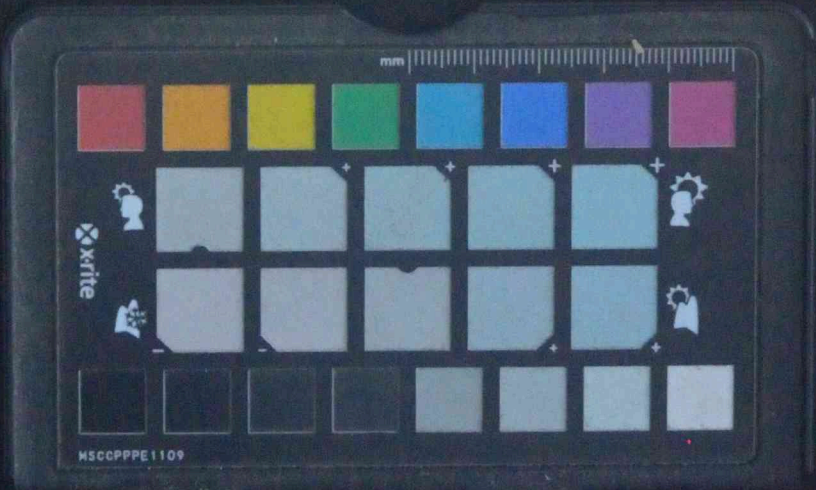


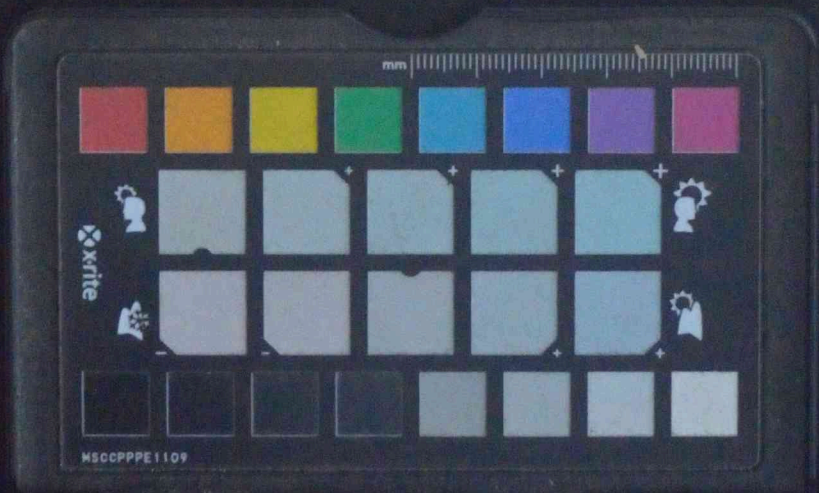
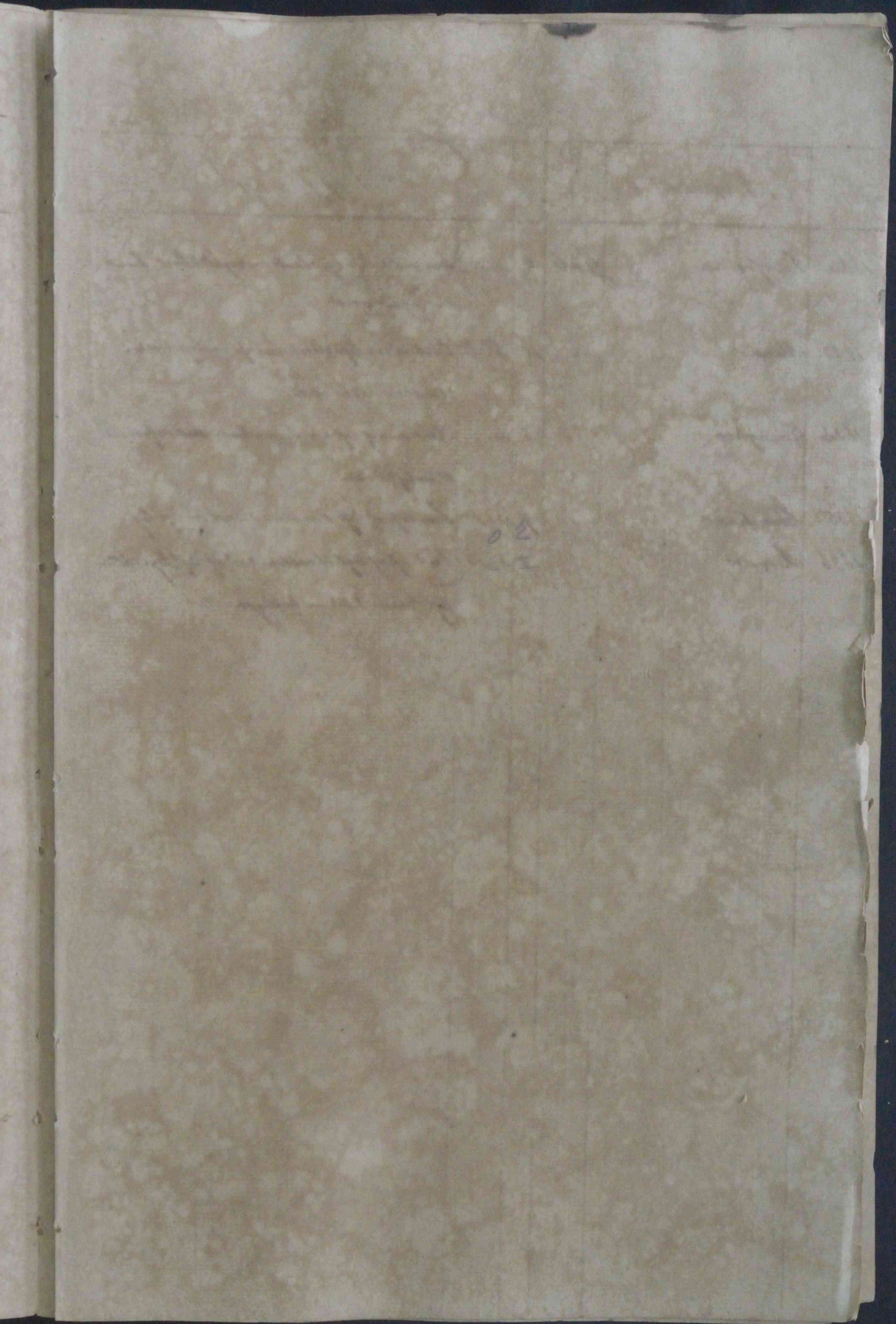
No.	Species	Measurements
1818	Swainson	11.5 - 12.5
1819	Swainson	11.5 - 12.5
1820	Swainson	11.5 - 12.5
1821	Swainson	11.5 - 12.5
1822	Swainson	11.5 - 12.5
1823	Swainson	11.5 - 12.5
1824	Swainson	11.5 - 12.5
1825	Swainson	11.5 - 12.5
1826	Swainson	11.5 - 12.5
1827	Swainson	11.5 - 12.5
1828	Swainson	11.5 - 12.5
1829	Swainson	11.5 - 12.5
1830	Swainson	11.5 - 12.5
1831	Swainson	11.5 - 12.5



N^o. Name of Person Description

1618	Saura	Woman 15	5-1 2	dent under right eye: scar on left cheek
1619	Senanghee	" 14	4-8 1/2	dent on right cheek: scar on left cheek
1620	Sonua	" 14	4-8 1/2	dent on left foot: scar on right cheek
1621	Sambesee	" 14	5-	dent on left thumb: scar on left finger and a scar on
1622	Sambesee	" 14	4-10 1/2	dent above right ankle: scar back of each shoulder
1623	Chingayo	" 15	5-10 1/2	dent on left finger on left hand: scar on left elbow: scar on right eye
1624	Chutchee	" 10	4-10	dent back of neck: scar on back
1625	Saha	Girl 12	4-4	dent on back of left shoulder: dent outside of right leg
1626	Siordas	" 12	4-7 1/2	dent on left arm: dent on right wrist: scar on right elbow
1627	Sandae	" 11	4-7 1/2	dent on back of left shoulder: several dents on right arm & breast
1628	Sanghee	" 11	4-6	dent on under lip: dent on left leg: scar on neck
1629	Siokol	" 9	4-4	several dents on left side of belly: several dents on each ankle
1630	Singee	" 9	4-4	dent on left elbow: scar on left side front scar on left leg
1631	Soola	" 11	4-8 1/2	dent inside of left knee: several dents about right knee





1630 *Profuma* Gal 9 ...
 1631 *Uran* ...
 1632 *Strophos* ...
 1635 *Strophos* ...
 1636 *Strophos* ...



No. 7. *Handwritten*

Handwritten

1632 *Professura* *Girls* 9 *4-10* *dent under left eye. dent on right elbow. dent on right wrist.*

1633 *Mens* 14 *4-6* *dent above left elbow. dent on left knee. dent on right side.*

1634 *Knights* 8 *4-10* *dent under of left eye. dent on head. dent on forehead. dent on left knee.*

1635 *Chaplain* 7 *4-10* *dent top of left shoulder. dent on left leg.*

1636 *Soldier* 7 *3-10* *dent top of left shoulder. 2d. of left leg. 1st. on left knee. 1st. on belly.*



